

## CAPABILITY STATEMENT

### Our Mission

Build a company that provides the highest quality engineers and redefine the standards within the IT service industry.

### Our Vision

We Go Where We Are Needed.

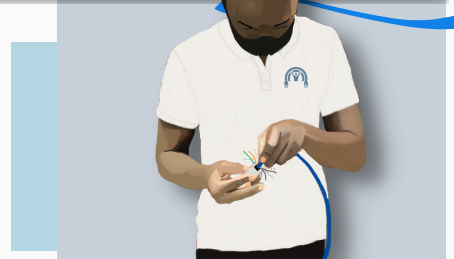
### About Us

Pattron employs a staff of experienced IT Field Engineers and Project Managers armed with an array of technical and professional skills ensuring we provide the utmost efficient and quality service. We pride ourselves on deploying professionals equipped with cutting-edge industry knowledge and skills - specifically, using industry leading tools (i.e., Fluke), project scoping, installation best practices, and technical documentation. That coupled with our emphasis on customer service and satisfaction embodies our company ethos.

### Core Competencies



- Access Control Systems
- Structured Cabling (Copper, Fiber, Coax, etc.)
- IT Project Scoping, Planning, and Cost Estimations
- IT Audits & Surveying
- IT Staffing and Training
- Hardware/Software Installations & Configurations
- Commercial, Retail, and Industrial Experience
- POS Support
- VOIP Systems
- Wireless Networks
- Data Center Install, Decommissions, and Migrations



### COMPANY PROFILE

CONTACT: Emmanuel Larbi, (CEO)

DUNS NUMBER: 101827233

EIN: 86-1671358

NAICS CODES: 238210, 541513, 561621, 541519, 611420, 811212, 811213

PSC: N059, N063, N075, DC01, DE01, DG01